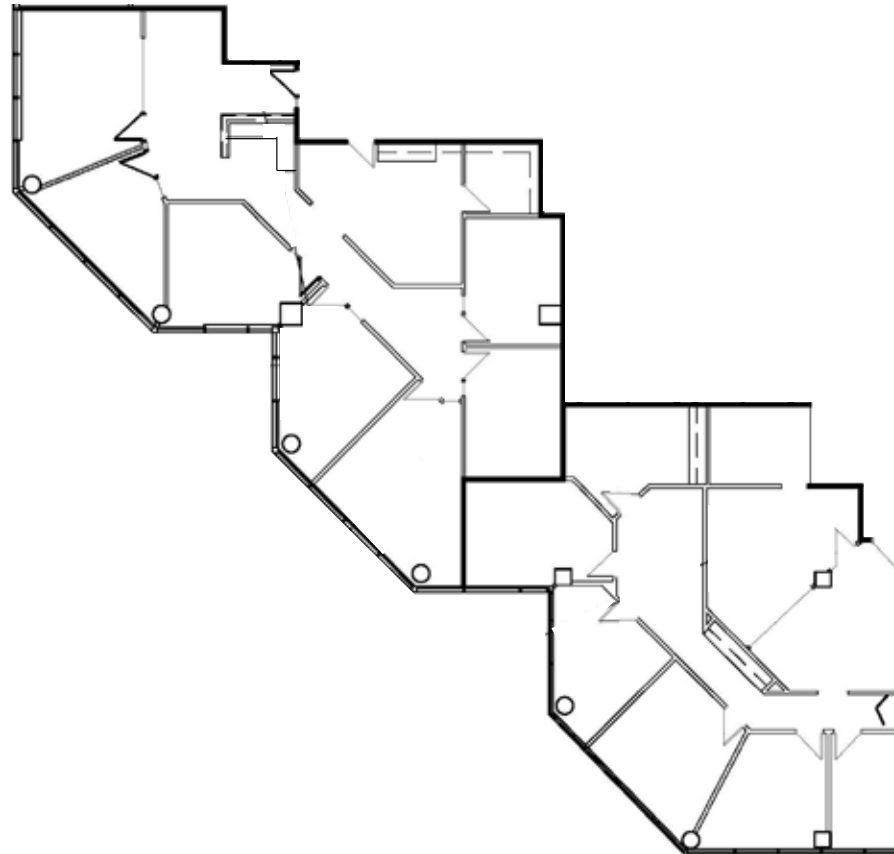




2800 NORTH CENTRAL AVENUE, PHOENIX, AZ 85004

SUITE 1750/1775 ±5,071 SF



FOR MORE INFORMATION, CONTACT

BRYAN TAUTE
Primary Contact
602.735.1710
bryan.taute@cbre.com

CHARLIE VON A
Secondary Contact
602.735.5626
charlie.vona@cbre.com

CBRE GAEDEKEGROUP