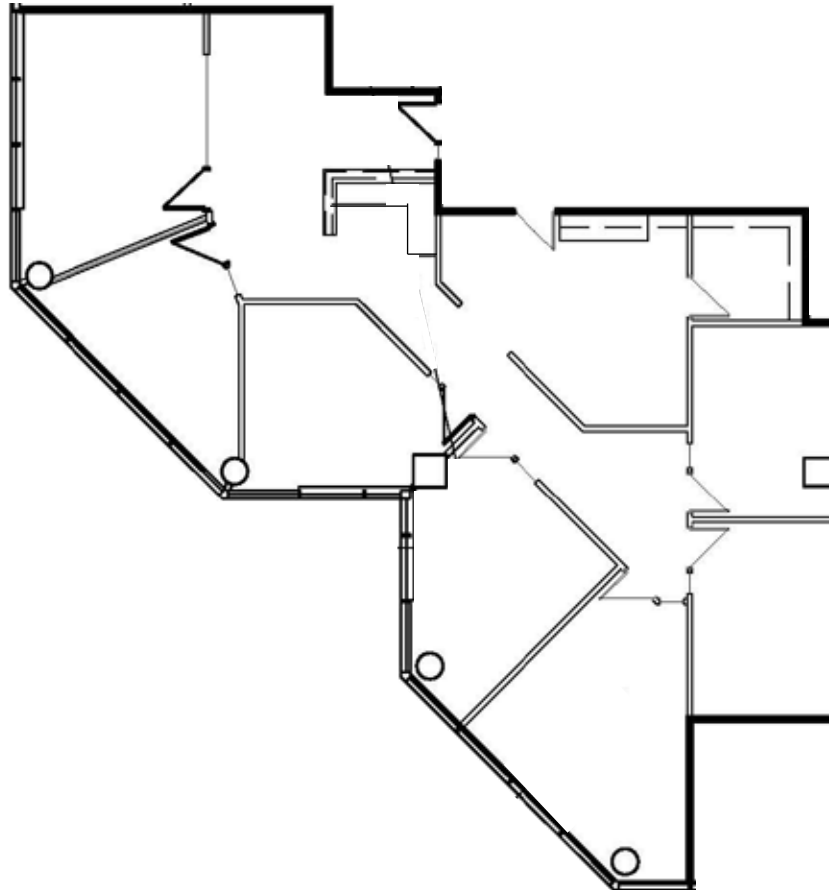




2800 NORTH CENTRAL AVENUE, PHOENIX, AZ 85004

# SUITE 1750 ±2,773 SF



## FOR MORE INFORMATION, CONTACT

**BRYAN TAUTE**  
Primary Contact  
602.735.1710  
[bryan.taute@cbre.com](mailto:bryan.taute@cbre.com)

**CHARLIE VON A**  
Secondary Contact  
602.735.5626  
[charlie.vona@cbre.com](mailto:charlie.vona@cbre.com)

**CBRE** GAEDEKEGROUP